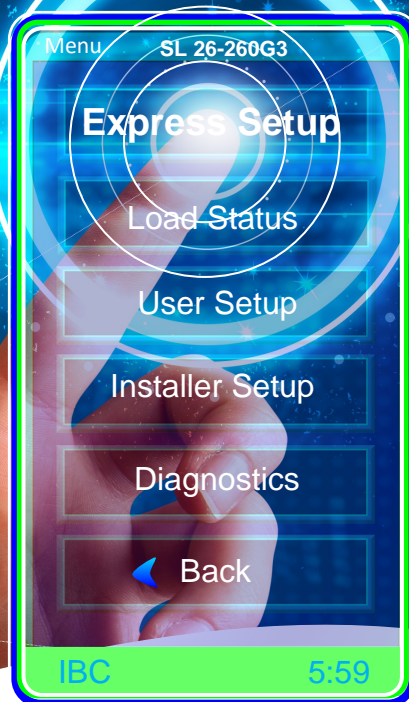
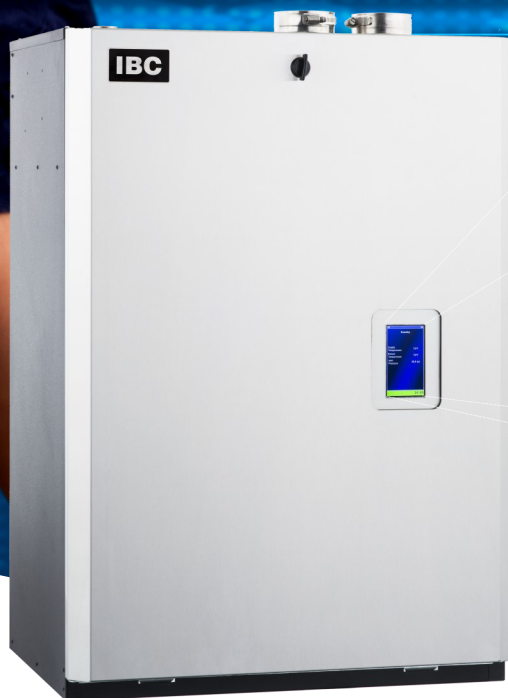


More Features



SL 26-260G3

26,000 to 260,000 BTU/H

Residential / Commercial Condensing Boiler

- **New Touch Screen V-10 Boiler Control**
Express set up, Remote monitoring & diagnostics, Easy USB programmability, Optional true native BACnet, Intuitive alert system
- 95% A.F.U.E.
- Built-in CSA/UL approved LWCO and manual reset high limit.
- With 24 boilers turndown ratio is 240:1 = min. firing rate range is 26,000 Btu/h all the way up to 6.24 million Btu/h in 1000 Btu/h increments.
- PVC/CPVC/PP approved - venting up to 400 feet.
- Built-in multiple zone pump control - up to 4 zones replacing the need for external pump controls.
- Built-in outdoor reset control of water temperature.
- **MFZ** Technology: Patented moisture management system. Protects and ensures long life for all components in the boiler.
- DDC Control 0-10 VDC or 4-20 mA without additional controls.
- The most advanced stainless steel fire tube boiler on the market today.
- Reverse flow detection.
- Very low water side and combustion side pressure drops.
- Connect your IBC Indirect Water Tank directly to the boiler without a primary loop.
- Unmatched safety features.
- Easier to install and service.
- Limited lifetime residential heat exchanger warranty.




V-10 PORTAL

A secure method of remotely managing your SL Boiler from any location.

Boiler control on the go!

IBC **Better Boilers**

IBC

Better Boilers

SL 26-260G3 Condensing Boiler

Specifications	SL 26-260G3
CSA Input (Natural Gas or Propane *) - MBH	26 - 260
CSA Input (Natural Gas or Propane *) - KW	7.62 - 76.2
CSA Output - MBH	24.9 - 239
CSA Output - KW	7.31 - 70.0
A.F.U.E.	95%
Min gas pressure (NG or Propane) - inch w.c.	4
Max gas pressure (NG or Propane) - inch w.c.	14
Ambient temperature - Low (°F/°C)	32°F / 0°C
Ambient temperature - High (°F/°C)	122°F / 50°C
Max relative humidity (non-condensing)	90%
Min water temperature	34°F / 1°C
Max programmable water temperature limit	190°F / 88°C
Max water temperature lockout limit	201°F / 94°C
Max ΔT - supply / return (electronic fence)	40°F
Power use (120Vac/60Hz) - Watts @ full fire - Watts	127 (less pumps)
Weight (empty) - lbs/Kg	162 / 74
Pressure vessel water content - USG/Liters	4.64 / 17.6
Max boiler flow rate - USgpm	25
Min boiler flow rate - USgpm	6
Max operating pressure - psig	30
Min water pressure - psig	8
Approved installation altitude - ASL	0 - 12,000'
Maximum equivalent vent length, each side (Natural Gas or Propane)	3" 200'
Air intake options: either direct vent or indoor supply	

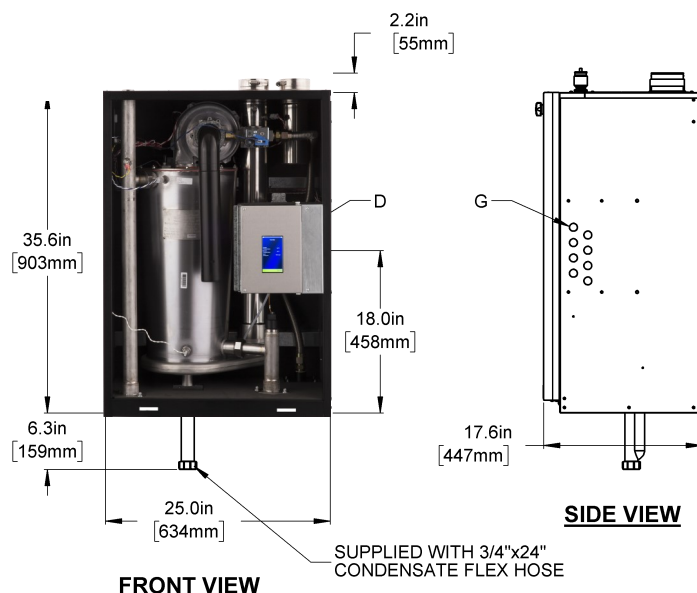
Fuel Conversions: NG boilers require an LP conversion kit - Part #P300 to be ordered separately if converting a boiler from NG to LP. LP boilers require a NG conversion kit - Part #P301 to be ordered separately if converting a LP boiler to NG.

Boilers are shipped with 30psi pressure relief valve.

Description	SL 26-260G3
A Exhaust outlet	3" Schedule 40
B Combustion air	3" Schedule 40
C Safety relief valve & air vent	3/4" NPT - F
D Touchscreen display	2-1/4" x 4"
E Water outlet	1 1/2" NPT - M
F Water inlet	1 1/2" NPT - M
G Knock-outs (8)	1/2"
H Gas inlet	3/4" NPT - F
I Condensate outlet	3/4" Hose

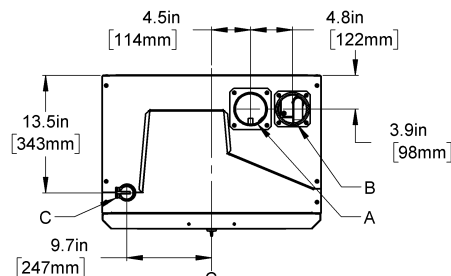
Exhaust pipe size	Maximum equivalent length
Sched.40; Rigid PPs	
3"	200'
90° Vent elbow	allow 8' equivalent
90° Long sweep elbow	allow 5' equivalent
45° Elbow	allow 3' equivalent
PPs 87-90° Elbows	use 8' equivalent
3" SS Sidewall Terminal (SST)	allow 20' equivalent of 3" sched. 40
Flexible PPs	
3" Flexible	60' (max.) lineal x 3.33 = equivalent

Surface	Distance from combustible surfaces	Recommended distance for installation and service
Front	2"	24"
Rear	0"	0"
Left side	1"	0" (to non-combustibles)
Right side	1"	4" (for electric and gas if required)
Top	2"	6" (for vent connection)
Bottom	0"	12" (for condensate trap and piping)

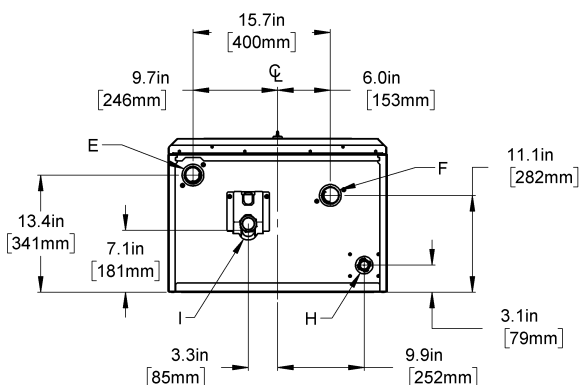


FRONT VIEW

SIDE VIEW



TOP VIEW



BOTTOM VIEW

Boiler Head Loss					
Flow rate (gpm)	6	10	15	20	25
Head loss @ flow (ft wc)	2'	3.5'	5.5'	8'	13'

Pressure vessel head loss



As part of our continuous product improvement, IBC reserves the right to change specifications and design without notice.

Canada
8015 North Fraser Way, Burnaby, BC V5J 5M8
Unit 5, 1455 16th Ave, Richmond Hill, ON L4B 4W5
USA
4203 Industrial Court, Sheboygan, WI 53083
Unit 1, 1100 Taylors Lane, Cinnaminson, NJ 08077

Tel: 604 877 0277
Tel: 905 918 0113
Tel: 920 783 8340
Tel: 856 877 0544
Fax: 604 877 0295
Fax: 604 877 0295
Fax: 920 783 8339
Fax: 856 735 5584

www.ibcboiler.com
Toll Free: 1 844 HEAT IBC (432 8422)

R3-May 2nd 2017